



# Parking Studies & Assessments



Bitzios Consulting has extensive experience in preparing parking policies and strategies (including 'Smart Parking' strategies), reviewing parking rates, preparing parking supply-v-demand assessments and creating management strategies for town centres and major development sites. We have also developed innovative GPS and GIS-based survey, mapping and analysis techniques. Parking supply and pricing policy is one of the most complex areas of transport planning as parking interfaces with land use/economic development, public transport and traffic issues. The breadth of our expertise in understanding the holistic impacts of parking is what sets us apart.



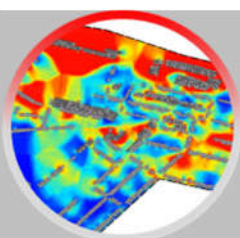
## Policies & Strategies

- Newcastle City Centre Parking Strategy
- Penrith CBD Parking Strategy
- Central Coast Parking Strategy
- Blue Mountain Parking Precinct Plans



## Pricing & Feasibility Studies

- Redland Hospital Multi-Level Car Park
- Gold Coast Pay Parking Review
- Manly Oval Car Park Feasibility Assessment
- Macquarie Park 2P Review



## Demand v Supply Analyses

- Nobby Beach Parking Study
- Logan City Parking Utilisation Study
- Sydney On-Street Mobility Parking Audit
- Coffs Harbour CBD Parking Study



## Layout Design

- Brookside Shopping Centre, Brisbane
- University of Wollongong Car Park Review
- Pittwater Park Parking Study
- Toowoomba Car Parking Review

Road Safety Studies    Traffic & Transport Modelling    Management & Review Services

Public Transport Studies    **Parking Studies & Assessments**    Traffic and Transport Studies

Transport Impact Assessments    Active Transport Studies    Traffic & Transport Facilities Design

**Gold Coast** | P:(07) 5562 5377  
 Suite 26 HQ, 58 Riverwalk Avenue, Robina, QLD 4226  
**Brisbane** | P:(07) 3831 4442  
 Level 2, 428 Upper Edward Street, Spring Hill, QLD 4000  
**Sydney** | P: (02) 9557 6202  
 Studio 203, 3 Gladstone Street, Newtown, NSW 2042

For further information please visit our website: [www.bitziosconsulting.com.au](http://www.bitziosconsulting.com.au) or email us at: [admin@bitziosconsulting.com.au](mailto:admin@bitziosconsulting.com.au)